

COSTUME INFO SHEET

Dance Concert 2025

ILLUMINATE 3/4 Jazz

Tues 7:30-8:30 with Ms. Michelle

Song - I Got You - Transform Remix

Costume Color(s):

Purple

Items Included with Costume:

Leotard with attached fringe skirt

Gem ponytail cuff

Additional Needed Items:

Body Wrappers Suntan or Capezio Caramel tights

***Bring 2 pairs of tights in case of run or hole**

No underwear

Black jazz shoes

Hair:

Low Bun with cuff around top of bun similar to picture

No Bangs (slick back and secure w/hairspray, bobby pins)

Stage Makeup & Misc:

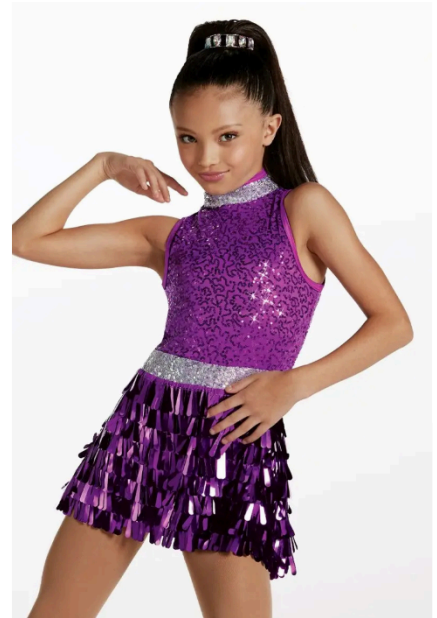
Makeup – see Dance Concert Packet or video online

No Jewelry (Stud earrings replaced with clear plastic studs or covered with a flesh-colored band-aid ok if absolutely necessary.)

No Nail Polish on fingers (and toes if barefoot)

Hang up/steam costume & do not wear until Photo Day & Dance Concert weekend

Write your Dancer's Name/Initials in/on EVERYTHING they bring to the Dance Concert – costumes, makeup, activities, water bottle, etc.



Remember your Tights & Shoes!

MKS Photo Days are May 5-8!

15% off your purchase

Expires Thurs, May 8, 2025

Tights used for the MKS Dance Concert:
BodyWrappers Brand: Ballet Pink or Suntan
-OR- Capezio Brand: Ballet Pink or Caramel
White and Black in any brand
 Full foot and convertible styles are available!

Dance Supply Etc.
 133 O'Fallon Plaza, 63366
 636-978-9432

Mon, Wed 11am-6pm
 Tue, Thu, Fri 11am-5pm
 Sat 10am-4pm

Photo Day @ MKS: Tues 5/6

Photo Time: 9:00pm

No stage makeup. Hair can be however you would like. From the neck down, match the Costume Info Sheet.

Final Bow Rehearsal @ MKS: Attend 1 Sat, May 10, 17, 31, or June 7 1:15-2pm

Finale Rehearsal @ MKS (IF IN FINALE): Attend 2 Sat, May 10, 17, 31, or June 7 12:30-2 pm

Volunteer Meetings will be held Sat 5/10 & 17 at MKS from 1:15-2pm, in Studio A

Dress Rehearsal(s) @ Troy High School – Please arrive with hair/makeup done & costume covered on a hanger
 Wed 6/11 Call Time - 6:00pm (approx. end 8:40pm)

Dance Concert(s) @ Troy High School – Please arrive with hair/makeup done & costume covered on a hanger
 Fri 6/13 6:15pm Show Call Time – 5:15pm
 Sat 6/14 11:15am Show Call Time – 10:15am
 We are estimating the concerts to be approximately 2 hours long with a 10 minute Intermission